

Childhood's End - act 3 scene 3

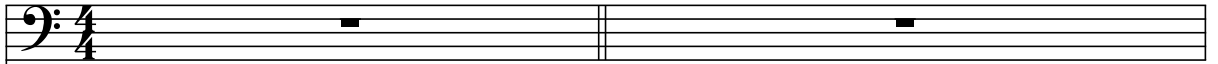
piano reduction

music: Ernst Bartmann, Manuel de Roo, Josef Irgmaier
libretto: Andreas Wiedermann (after the novel by Arthur C. Clarke)

♩ = 76

Moderato (♩ = c. 108)

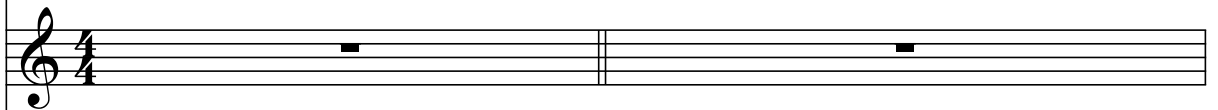
Karellen



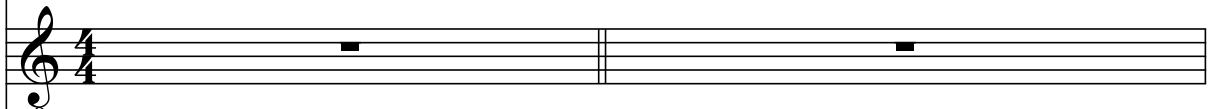
Rashaverak



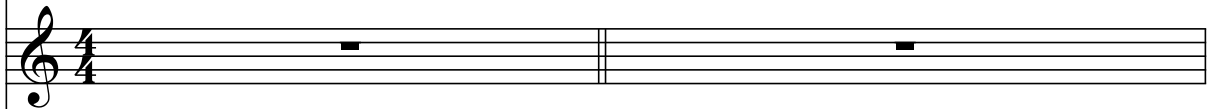
Jean



George



Jeffrey



Piano reduction

glockenspiel
p electric guitar + bass

pp strings
electric guitar + bass
p timpani

Jean

mf

Jeff wan - ted me, that

5

Jean

woke me up. I'm not

mf

G

Night - mares?

7

Jean

sure. He was frigh-tened when I came in.

9

Jeff

p

I was n't frigh-tened. But it was strange.

11 *p*

G

8 Tell me a-bout it.

15

A

19 Jeff

There were moun-tains. They were high,

strings (trem)
spin spark shaker

19

pp

22 Jeff

no snow on them. Some were bur-ning.

22

24

G

8

You mean vol-ca-noes?

Jeff

Not real-ly. They were

24

brass *f* *p*

strings (trem) *pp*

27

Jeff

bur-ning all o-ver, with fun-ny blue flames. While I was wat-ching, the

27

30

rit. **Moderato** (♩ = c. 108)

G

Go

Jeff

sun came up.

30

brass *f* *pp* *p*

Gliss.

34

G

8 on.

Jeff

I came up

34

B

37

Jeff

so quick - ly, and it was much too big.

37

violin solo
electric guitar

p

37

p

40

G

8 Is

Jeff

It was - n't the right co - lor. It was such a pret - ty blue.

40

44

G

8 that all?

Jeff

That's when mum-my came and woke me up.

44

p

harp

48

Jean

8 It's just a sil - ly dream. For-get all a - bout it, go

G

8 It's just a sil - ly dream. For-get all a - bout it, go

48

mf

p

52

Jean

back to sleep.

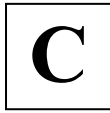
G

8 back to sleep.

Jeff

I will, Dad-dy. I think I'll try and go there

52



56
Jeff
a - gain.

56
p harp + strings

60
Kar
A blue sun? That should have eased i -

60

63
Kar
den - ti - fi - ca - tion.

Rash
No doubt it is Al - pha - ni - don Two.

63

66
Rash

The dis - tor - tion of time is ve - ry

68
Rash

in - te - res - ting. Ob - vi - ous - ly the pla - net is ro - ta - ting quite

71
Rash

slow - ly, Thus he must have seen ma - ny hours go - ing

73

Kar

Rash

Con - ti - nue the sur - veil - lance.

by in a few mi - nutes.

76

80

D **Largo** ♩ = 56

trumpet

p str (harm+gliss.) + cel + harp + el guit

84

Jeff

Space no pla - net, no sur - roun - ding land - scape, no world

87

Jeff

un - der - foot. On - ly the stars, hang - ing a - gainst them, a great red

87

+ oboes + bassoons

89

Jeff

sun that's bea - ting like a heart.

89

trumpet

91

Jeff

The star ex -

91

E Moderato ♩ = 92

mp str (harm+gliss.) + cel + harp + el guitar + brass (con sord.)

94

Jeff

pands and cool, once more a ragged, flame red cloud

97

Jeff

cloud cloud

trumpet

100

Rash

f

Ty - pi - cal pul - sa - tion of a chan - ging star.

103

Rash

The next star that matches to this description is Rham-san-dron

103

- brass

106

Kar

Which-e-ever it might

Rash

nine. Could be Pha-ra-ni-don twelve as well.

106

f

109

Kar

be the child is de-par-ting fur-ther and fur-ther from home.

109

F

112

Jean

Na - na - ni - na - ni, na - na - ni - na - ni,

Jeff

A white sun... a blue

trumpet
str (harm+gliss.) +
cel + harp + el guit

115

Jean

na - na - ni - na. na - na - ni - na.

Jeff

sky, flecked with clouds, ra - cing be - fore a storm. A hill sloped ve - ry gent - ly

115

118

Jean

na - na - ni - na.

Jeff

down to an o-cean torn in - to spray by the ra - ve - ning wind.

118

trumpet

121

Jeff

It's fro - zen as if glimpsed in a flash of light - - - ning.

121

accel. - - -

G

124

Jeff

Far, far a-way on the ho - ri - zon some-thing that is not of

124

str (harm+gliss.) + cel + harp + el guit

Moderato ♩ = 92

127

Jeff

Earth a line of mis-ty co-lumns, ta-pe-ring slight-ly as they soared out

130

Rash

Si-

Jeff

of the sea and lose them-selves a-mong the clouds. clouds.

133

Rash

de-ne-us Four and the Co-lumns of Dawn. He has reached the

136

Kar  And he has on - ly just be - gun his jour - ney.

Rash  cen - ter of U - ni - verse.

Jeff  A pla - net

 strings (vl+va: harmonics+gliss.)
harp

H


139

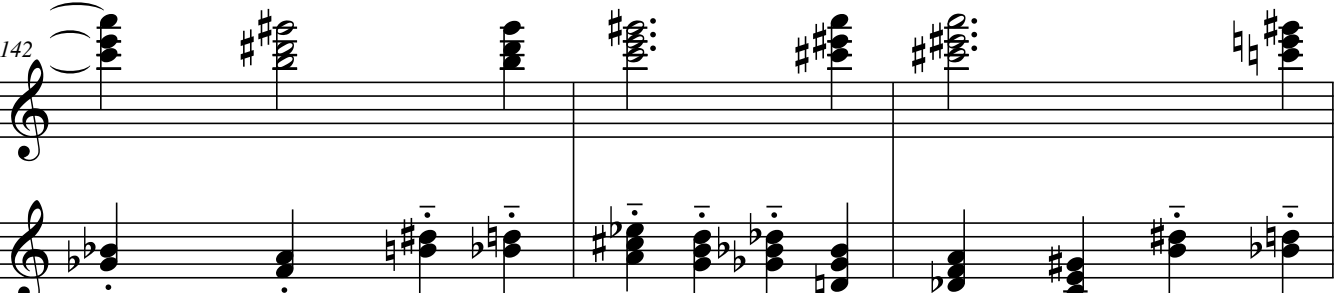
Jeff  ab - so - lute - ly flat. A my - ri - ad of ge - o - me - tri - cal pat - terns that



142

accel. - - -

Jeff  crawles and moves and chan - ges its co - lor. It is a world of two di - men - sions.



145

Jeff

There are be-ings no more than a frac-tion of a cen-ti-me-ter in thick-ness.

I

148 ♩ = 108

Rash

Hex-a-ne - rax Two.

harp solo

152 rit. - - - ♩ = 92

Kar

Ob - vi - ous - ly you

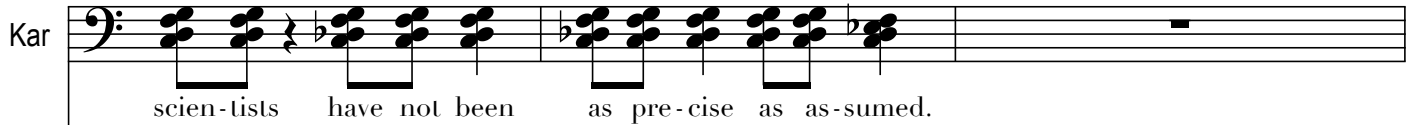
Who could have thought that life can e - xist there?

strings (vi+va: harmonics+gliss.)

J

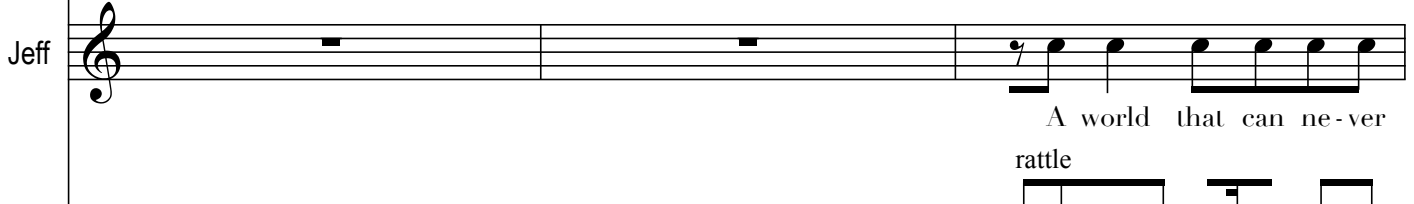
155

Kar

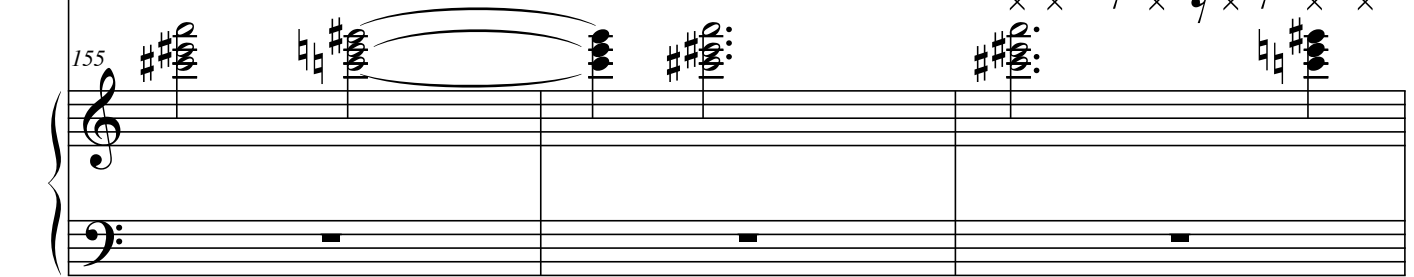


scien-lists have not been as pre-cise as as-sumed.

Jeff

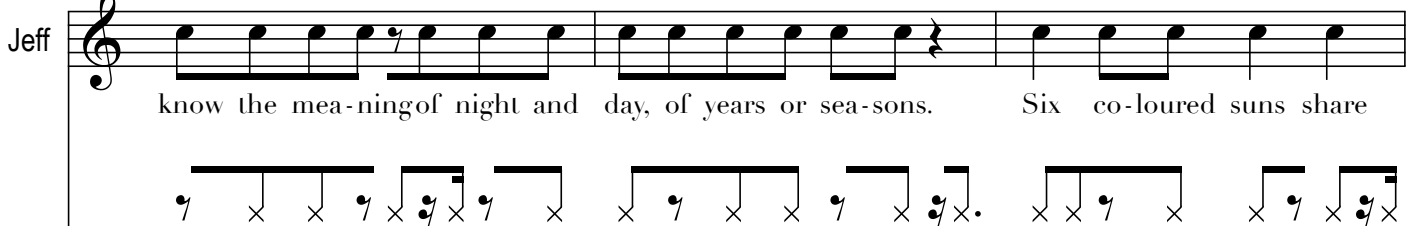


A world that can ne-ver rattle



158

Jeff

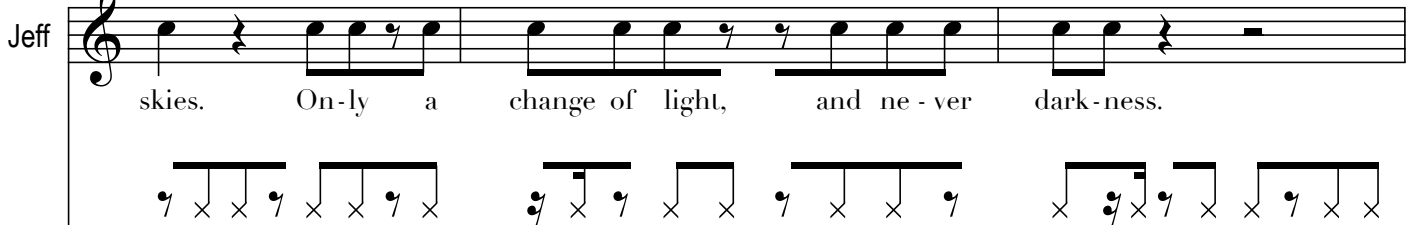


know the mea-ning of night and day, of years or sea-sons. Six co-loured suns share




161

Jeff



skies. On-ly a change of light, and ne-ver dark-ness.



164

Jeff

Eve-ry mo-ment is u-nique.

167

Jeff

Great, ma - ny fa - ce - ted crys - tals stand group-ed in

169

Jeff

pat-terns, mo-tion-less in the e-ras of cold, gro-wing slow-ly

172

Jeff

when the world is warm a - gain.

174

K

176

Kar

So he has left the mil - ky way.

179

Kar

Who knows. He's just drea-ming. It is

Rash

Right. Now it won't take — much lon-ger.

179

182

Kar

just the i - ni - tial phase. We will know when the change starts.

182

L

185

8va

3 strings

8va

3

188

Rash

Don't touch her toy. You can-not move it. May-be she is an-noyed,

(8va)

191

Rash

and then, we don't know what would hap - pen.

G

What's

(8va)

193

G

hap - - - pe - ning? What are my chil - dren?

(8va)

f strings (triplets = gliss.) + brass

195

Rash

We can-not in-ter-fer-e, be-cause we can-not un-der-stand.

G

Why is this

195

mp harp

+ glockenspiel tubular bell

gliss.

gliss. 3 + strings

M

198

Rash

It has to hap-pen to some one. We call it

G

hap-pe-ning to us?

198

gliss.

gliss.

+ 8^{va}

p

201

Rash

To-tal Break-through. Re-mem-ber Ra-vi

201

204

Rash

Boy - ce's par-ty? I knew, your wife's chil - dren would be the

204

207

Rash

first. That is

G

ff

Who has done that?

207

french horns

strings

207

210

Rash

some-thing we can-not an-swer. But there are ma-ny ra-ces in the u-ni-verse,

210

213

Rash

and some of them dis - co - vered these po - wers long be - fore your

213

N

216

Rash

spe - ci - es or mine ap - peared on the scene.

G

What have you done?

216

crotales with >, glockenspiel, tubular bell

brass

220

Kar

We have ne - ver been more than guar - di - ans, do - ing a du - ty im -

Rash

We have ne - ver been more than guar - di - ans, do - ing a du - ty im -

220

223

Kar
posed u - pon us from a - bove. We are the mid-wives,

Rash
posed u - pon us from a - bove. We are the mid-wives,

223

226

Kar
hel - ping to bring some-thing new and won-der - ful in - to be - ing.

Rash
hel - ping to bring some-thing new and won-der - ful in - to be - ing.

226

229

Kar
We are the mid-wives. But we o-ur-selves are bar-ren.

Rash
We are the mid-wives. But we o-ur-selves are bar-ren.

G
mp
Jef-frey was the gui-nea pig in

229

233

Kar We did not in - ter - fere ex - cept when we had to.

Rash We did not in - ter - fere ex - cept when we had to.

G *ff*
this ex - pe - ri - ment.

236

Kar En - joy them while you

Rash En - joy them while you

G *mp*
What shall we do a - bout our chil - dren?

240

Kar may. They won't be yours for long. _____

Rash may. They won't be yours for long. _____